



Prioritising & Optimising patients pre-surgery

Richard Shore
Karolinska University Hospital,
Stockholm, Sweden

Course in Obstetric
Anaesthesia 2012

P & O pre-surgery



Muhimbili Karolinska
Anaesthesia & Intensive Care Collaboration
www.mkaic.org • info@mkaic.org



Key points!



- **Prioritising** among **acute CS** mothers?
- **Teamwork + Communication + System!!!**
- **Re-assess** pre-surgery!
- **Risk vs benefit!** (difference between acute & elective?)
- **Must do:s** pre-surgery?
- **Optimising** - How? How much? Urgency?

Course in Obstetric
Anaesthesia 2012

P & O pre-surgery



Muhimbili Karolinska
Anaesthesia & Intensive Care Collaboration
www.mkaic.org • info@mkaic.org



Prioritising



Women waiting for CS



Course in Obstetric
Anaesthesia 2012

P & O pre-surgery



Muhimbili Karolinska
Anaesthesia & Intensive Care Collaboration
www.mkaic.org • info@mkaic.org



Prioritising



Course in Obstetric
Anaesthesia 2012

P & O pre-surgery



Muhimbili Karolinska
Anaesthesia & Intensive Care Collaboration
www.mkaic.org • info@mkaic.org



Prioritising



Course in Obstetric
Anaesthesia 2012

P & O pre-surgery



Muhimbili Karolinska
Anaesthesia & Intensive Care Collaboration
www.mkaic.org • info@mkaic.org



Prioritising

Urgency!? ABCDE!



- ABCDE
- First: Maternal indications
- Second: Fetal indications
- Third: Other considerations

Course in Obstetric
Anaesthesia 2012

P & O pre-surgery



Muhimbili Karolinska
Anaesthesia & Intensive Care Collaboration
www.mkaic.org • info@mkaic.org



Prioritising Triage - Who?



- Teamwork essential!
- OB/ANE + Dr/AO/Nurse + Ward/Pre-op/OD
- Communicate! Discuss! Call each other!
- Is cost effective and saves lives!

Course in Obstetric
Anaesthesia 2012

P & O pre-surgery



Muhimbili Karolinska
Anaesthesia & Intensive Care Collaboration
www.mkaic.org • info@mkaic.org



Prioritising Triage - System!



- System example – How to think!:
 1. Red case -> NOW
 2. Orange case -> Very soon
 3. Yellow case -> Soon
- **Re-assess!** Things can change!

Course in Obstetric
Anaesthesia 2012

P & O pre-surgery



Muhimbili Karolinska
Anaesthesia & Intensive Care Collaboration
www.mkaic.org • info@mkaic.org



Prioritising Triage - System!



- System example – How to think!:
 1. Red case -> NOW
 2. Orange case -> Very soon
 3. Yellow case -> Soon
- **Re-assess!** Things can change!



Safety first!

Two questions:



1. Risk vs Benefit of surgery?

2. Optimal physical condition?

Course in Obstetric
Anaesthesia 2012

P & O pre-surgery



Muhimbili Karolinska
Anaesthesia & Intensive Care Collaboration
www.mkaic.org • info@mkaic.org



Must do:s pre-surgery!



Brief medical history + physical examination!

- **A** = Evaluate the airway
- **B** = Respiratory system
- **C** = Cardiovascular system
- **D** = Disabilities + Drugs
- **E** = Everything else? No time! BUT: Allergies

Course in Obstetric
Anaesthesia 2012

P & O pre-surgery



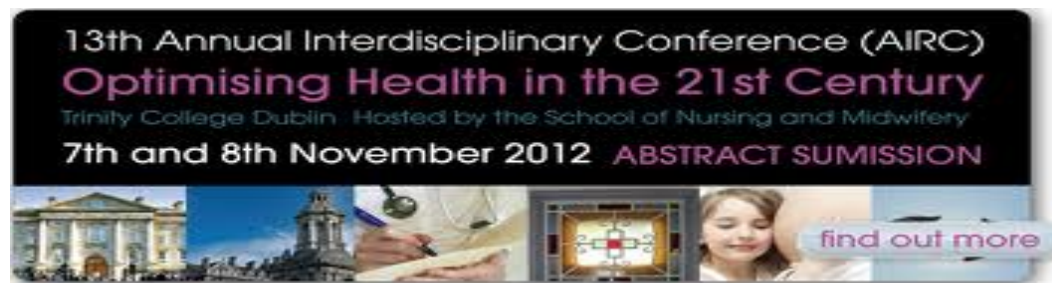
Muhimbili Karolinska
Anaesthesia & Intensive Care Collaboration
www.mkaic.org • info@mkaic.org



Optimising



1. Make an assessment
2. Evaluate the risk vs benefit – Teamwork!
3. Make general pre-operative preparations
4. Make special pre-operative preparations
but ONLY if...



Course in Obstetric
Anaesthesia 2012

P & O pre-surgery



Muhimbili Karolinska
Anaesthesia & Intensive Care Collaboration
www.mkaic.org • info@mkaic.org



Special investigations



Three questions:

1. What facilities are available?
2. Revealed by clinical assessment?
3. Alter the management?

Course in Obstetric
Anaesthesia 2012

P & O pre-surgery



Muhimbili Karolinska
Anaesthesia & Intensive Care Collaboration
www.mkaic.org • info@mkaic.org



Key points again!



- **Prioritising** among **acute CS** mothers?
- **Teamwork + Communication + System!!!**
- **Re-assess** pre-surgery!
- **Risk vs benefit!** (difference between acute & elective?)
- **Must do:s** pre-surgery?
- **Optimising** - How? How much? Urgency?

Course in Obstetric
Anaesthesia 2012

P & O pre-surgery



Muhimbili Karolinska
Anaesthesia & Intensive Care Collaboration
www.mkaic.org • info@mkaic.org



Thank you!

E-mail me at: richard.shore@karolinska.se



Course in Obstetric
Anaesthesia 2012

Picture from africa.unfpa.org

P & O pre-surgery



Muhimbili Karolinska
Anaesthesia & Intensive Care Collaboration
www.mkaic.org • info@mkaic.org



Elective Assessment



- History
 1. Medical history
 2. Anaesthetic history
 3. Drug history
 4. Family history
- Physical examination
- Special investigations



Course in Obstetric
Anaesthesia 2012

P & O pre-surgery



Muhimbili Karolinska
Anaesthesia & Intensive Care Collaboration
www.mkaic.org • info@mkaic.org

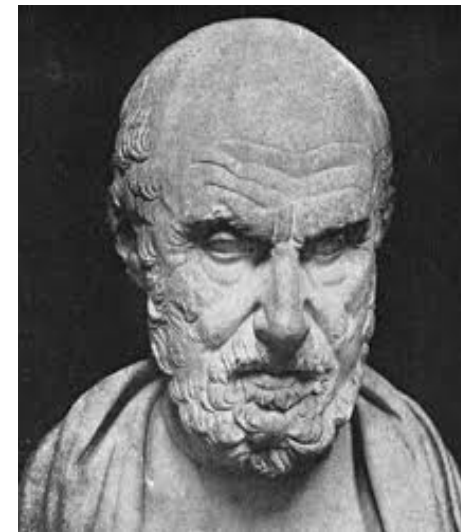


History

Medical history



- Coexisting medical disease must be identified!
- Most relevant tend to be:
 1. Respiratory (A+B)
 2. Cardiovascular disease (C)
 3. Allergy
- Alcohol
- Smoking



Course in Obstetric
Anaesthesia 2012

P & O pre-surgery



Muhimbili Karolinska
Anaesthesia & Intensive Care Collaboration
www.mkaic.org • info@mkaic.org



History

Anaesthetic history



- Previous anaesthetic records
- Difficult intubation
- Postoperative pain
- Sore throat
- Headache
- PONV



Course in Obstetric
Anaesthesia 2012

P & O pre-surgery



Muhimbili Karolinska
Anaesthesia & Intensive Care Collaboration
www.mkaic.org • info@mkaic.org



History

Drug history



- Antihypertensives
- Insulin
- Diuretics
- Asthma medication
- Antibiotics



In general -> Keep the medication!

Course in Obstetric
Anaesthesia 2012

P & O pre-surgery



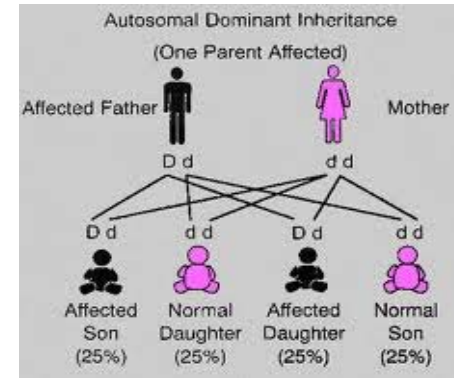
Muhimbili Karolinska
Anaesthesia & Intensive Care Collaboration
www.mkaic.org • info@mkaic.org



History

Family history

- Malignant hyperthermia



Course in Obstetric
Anaesthesia 2012

P & O pre-surgery



Muhimbili Karolinska
Anaesthesia & Intensive Care Collaboration
www.mkaic.org • info@mkaic.org



Physical examination



- Every patient!
- General
- Cardiovascular
- Respiratory
- **Airway**



Course in Obstetric
Anaesthesia 2012

P & O pre-surgery



Muhimbili Karolinska
Anaesthesia & Intensive Care Collaboration
www.mkaic.org • info@mkaic.org



Airway

Assess airway

- Mouth opening
- Teeth
- Jaw mobility
- Neck mobility
- Short neck
- Small mandible
- Mallampati



Course in Obstetric
Anaesthesia 2012

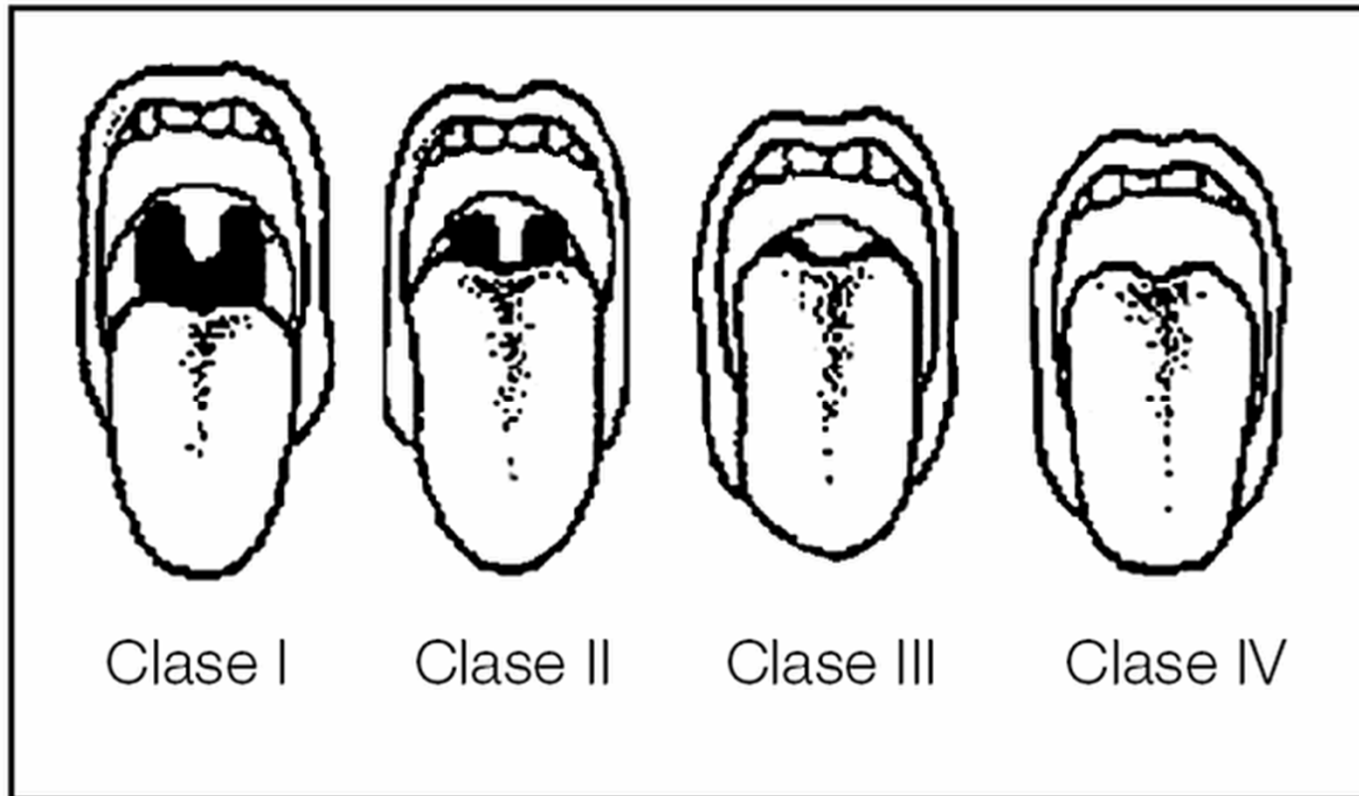
P & O pre-surgery



Muhimbili Karolinska
Anaesthesia & Intensive Care Collaboration
www.mkaic.org • info@mkaic.org



Airway Mallampati



Course in Obstetric
Anaesthesia 2012

P & O pre-surgery



Muhimbili Karolinska
Anaesthesia & Intensive Care Collaboration
www.mkaic.org • info@mkaic.org



ASA-classification



1. A **normal healthy** patient
2. A patient with **mild** systemic disease
3. A patient with **severe** systemic disease
4. A patient with **severe** systemic disease that is a **constant threat to life**
5. A **moribund** patient who is not **expected to survive without** the operation
6. A declared brain-dead patient whose organs are being removed for **donor** purposes

Course in Obstetric
Anaesthesia 2012

American Society of
Anesthesiologists 

P & O pre-surgery



Muhimbili Karolinska
Anaesthesia & Intensive Care Collaboration
www.mkaic.org • info@mkaic.org



Preoperative preparations

General



- Preoperative fasting!
- Consent!
- Information!
- Questions?

Course in Obstetric
Anaesthesia 2012

P & O pre-surgery



Muhimbili Karolinska
Anaesthesia & Intensive Care Collaboration
www.mkaic.org • info@mkaic.org





Preoperative preparations

Specific

- Anemia
 1. Investigate before treatment
 2. Iron deficiency?
 3. Acceptable Hb? -> Ideally > 10 g/L

Course in Obstetric
Anaesthesia 2012

P & O pre-surgery



Muhimbili Karolinska
Anaesthesia & Intensive Care Collaboration
www.mkaic.org • info@mkaic.org



Preoperative preparations

Specific



Course in Obstetric
Anaesthesia 2012

P & O pre-surgery



Muhimbili Karolinska
Anaesthesia & Intensive Care Collaboration
www.mkaic.org • info@mkaic.org



Preoperative preparations

Specific



Course in Obstetric
Anaesthesia 2012

P & O pre-surgery



Muhimbili Karolinska
Anaesthesia & Intensive Care Collaboration
www.mkaic.org • info@mkaic.org



Preoperative preparations

Specific



Fluid imbalance

- Multiple causes!
- Symptoms?
- Appropriate fluids?

Course in Obstetric
Anaesthesia 2012

P & O pre-surgery



Muhimbili Karolinska
Anaesthesia & Intensive Care Collaboration
www.mkaic.org • info@mkaic.org



Preoperative preparations

Specific



Electrolyte imbalance

- Can you measure it?
- Sodium and potassium -> should be corrected!
- High / Low? High potassium?!

Course in Obstetric
Anaesthesia 2012

P & O pre-surgery



Muhimbili Karolinska
Anaesthesia & Intensive Care Collaboration
www.mkaic.org • info@mkaic.org



Preoperative preparations

Specific



Cardiovascular

- Myocardial infarction
- Cardiac failure
- Arrhythmias
- Hypertension

Course in Obstetric
Anaesthesia 2012

P & O pre-surgery



Muhimbili Karolinska
Anaesthesia & Intensive Care Collaboration
www.mkaic.org • info@mkaic.org



Preoperative preparations

Specific



Respiratory disease

- Acute respiratory disease -> NO Anesthesia??!!
- Chronic respiratory disease, COPD
- Asthma -> Inhalations

Course in Obstetric
Anaesthesia 2012

P & O pre-surgery



Muhimbili Karolinska
Anaesthesia & Intensive Care Collaboration
www.mkaic.org • info@mkaic.org



Preoperative preparations

Specific



Metabolic disease

- Diabetes mellitus? How manage?
- Liver disease (INR?); Hepatitis -> Postpone operation for at least six months
- Thyroid disease -> Correct (euthyroid)

Course in Obstetric
Anaesthesia 2012

P & O pre-surgery



Muhimbili Karolinska
Anaesthesia & Intensive Care Collaboration
www.mkaic.org • info@mkaic.org



Health declaration?



- Patient checklists before your own checklists!
- No objections / healthy (ASA 1) -> Operation
- Minor problems -> Assessment by nurse
- Significant problems -> Assessment by
Anaesthesiologist
- Future -> Preop Clinic

Course in Obstetric
Anaesthesia 2012

P & O pre-surgery



Muhimbili Karolinska
Anaesthesia & Intensive Care Collaboration
www.mkaic.org • info@mkaic.org



Thank you!

E-mail me at: richard.shore@karolinska.se



Course in Obstetric
Anaesthesia 2012

Picture from africa.unfpa.org

P & O pre-surgery



Muhimbili Karolinska
Anaesthesia & Intensive Care Collaboration
www.mkaic.org • info@mkaic.org

